



## School Newsletter January 2, 2021

### Important Dates



### Upcoming Events

#### Classes Resume

Monday, January 4, 2021

#### No School

#### Observance of

**Martin Luther King Jr. Day**

Monday, January 18, 2021



Happy New Year! I hope that this correspondence finds you and your family in good health, and I send you all wishes for a safe and prosperous new year. I hope our students have played and worked during this time off, so that we have a running start in returning to the new year. As we finish this week and our 2-week winter break, let's all slowly start to prepare for our return to "work".

- All classes resume on Monday, January 4, 2021. Students will return to the same teacher they had before break.
- Anyone who was unable to complete the parent survey to indicate your intention for your child's attendance for the second semester may call the office on Monday at 754-322-5400 to have your intention recorded.
- Any parent intending to have their transition from virtual school to face-to-face school must contact the office before bringing your child into the building. This will allow us to prepare a safe space for your child.
- Our staff is beginning to realign our classes. Parents will receive an email during the next week or two letting you know if your child will have a class change. Most of our students will not have a class change. Changes will be effective starting the beginning

of the third quarter, Tuesday, January 19, 2021

- Ensure that your child gradually transitions back to their normal routines of appropriate bedtime, eating a healthy breakfast, and reading daily.

Other reminders include:

- Students having breakfast should arrive between 7:30 - 7:45. Breakfast closes at 7:50.
- Students not having breakfast should arrive between 7:50 - 8:00.
- Parents are no longer allowed to leave their vehicles during arrival or dismissal. You must have your child seated curbside. Our staff will assist small children as the exit and enter vehicles.
- Visitors are not allowed on campus. If you need assistance, call the office at 754-322-5400.
- Continue to monitor your child's health daily. If they exhibit any signs of illness, including low-grade fever, they must stay home until symptom-free. Students found to be sick at school will be evaluated by a nurse using a COVID protocol and sent home for further assessment and isolation immediately.
- All students must wear a mask that snugly covers their mouths and noses at all times during the day.

Thank you for your continued cooperation and support as we work to keep your child safe and educationally prepared to change the world.

Tonya E. Frost, Ed. S.

Principal

Bayview Elementary

"Educating Responsible Citizens"

---

# COME JOIN THE BAYVIEW CREW AT MATHNASIUM!



*Changing Lives Through Math.*

MATHNASIUM OF FT. LAUDERDALE is your neighborhood math learning center that teaches kids the way that makes sense to THEM with fully customized learning plans!

Both virtual and in-center programs are available.

**Mention The Bayview Crew for \$100 off**  
expires 1/31/21

**CALL (954) 947-3434 FOR YOUR COMPLIMENTARY ASSESSMENT**

---

## **Traffic Alert!!**

Effective immediately, parents are required to adhere to the following guidance in the car loop. Now that everyone has adjusted, it is expected that everyone will cooperate with the directions of our staff to keep our children safe and traffic flowing.

1. Do NOT exit your vehicle at any time. Staff will assist students into the vehicle.
2. Have your student seated on the rear passenger side to facilitate exit and entry.

3. Do not call children into traffic or to cross traffic.
4. Only enter the loop as you drive west on Middle River Drive.

---

## Summer Reading Challenge:



The time has come! Students, please dig out your already filled out logs or start completing a new one over the Winter Break. All Summer Reading Logs will be collected on January 4th when we return from Winter Break. A special, mystery prize will be given to students that completed majority of the log. Don't forget to read every night.

Please click on the link below for the Summer Reading Log.

[Summer Reading Log](#)

---

## Attendance Policy 5.5 – Revised

Newly adopted language begins under Section VIII on page 9. The amended language for paragraph A. 2. reads as follows:

2. During distance learning, the use of student cameras is required for attendance and instruction. Students will be counted in attendance in the learning environment during their scheduled class time. Teachers should be flexible and consider any extenuating circumstances of individual students who may be unable to turn on a camera. Teachers may consider other evidence of attendance for individual cases.

The School Board's decision to require camera usage by students was based on feedback from students, teachers, administrators, and other employees from an Attendance Survey that was conducted between Nov. 6 – 16, 2020. Results from the survey revealed that 75% of the School-based administrators who responded and 69% of teachers who responded support requiring cameras for attendance. School Board members unanimously agreed the policy should require students to turn on their cameras during attendance and direct instruction.

---

## School Success Reminders:

Sign into your class meeting by 8:00 a.m. each morning.

Use the class chat only for communicating with the teacher or about the lessons.

Attendance in specials is required, just as if everyone was in the building. Students who do not participate or keep their cameras on for teachers to observe and assess will receive grades of 3.

Our school requirement for iReady practice is 2 reading lessons and 2 math lessons per week. That's only one per day. We require 80% or higher as a passing score.

Each student is expected to read at least 30 minutes per night. They can read to themselves, to a family member/pet/stuffed friend! Just read!

---

### **Power Up:**

Due to the low number of curbside meals served at our school, curbside meal distribution will no longer be offered effective January 5, 2020. Free curbside grab-and-go meals continue to be available at other school locations, the closest school is Sunrise Middle. Meals are distributed every Tuesday and Thursday for free for all children 18 years and younger from 11:00am- 12:00pm (kitchen back door). Please visit [Browardschool.com/foodservice](http://Browardschool.com/foodservice) or call 211 for available sites and times. Children or their parents can drive or walk up to receive meal bundles that contain multiple days-worth of meals. Parents must bring identification for their child, like a student ID, birth certificate, or report card, to pick up meals at each distribution if the child is not present. We encourage our families to take advantage of free nutritious meals so all children can power up!

---

# Yearbook Cover Contest

We are inviting ALL Bayview students to enter their drawings in our annual Yearbook cover contest! A winner will be selected from each grade level from an independent panel of judges. Enter the Cover Contest for a chance to WIN! We will feature the winner of the front cover, and runners up from each grade on the back. The winner will be announced prior to distribution and the winner will receive a FREE yearbook!

## OFFICIAL RULES

**Theme: Just Keep Swimming**  
**Deadline: Friday, January 22, 2021**

### Submit Artwork On

- Draw your picture on an 8 ½ x 11 sheet of white paper
- All drawings MUST be VERTICAL Orientation

### All Entries Must Include

- Incorporate the words "Bayview Elementary" into your drawing or leave some background space and the yearbook staff will type it for you
- The Year 2020 – 2021
- On the BACK of your artwork, write your NAME, GRADE, and TEACHER

### Tips for a good entry

- The lettering should be VERY NEAT and big enough to read easily. All words must be spelled correctly.
- You can include the Bayview Sailboat but it is not required.
- Use up the whole sheet of paper (the bigger the better)
- Mix up your medium- Markers, color pencils, crayons and combine them together, etc.
- Not a lot of white space. Remember to follow the theme in your artwork and pay attention to color and use of space.



All Artwork MUST be original works from the student



Turn in the artwork AT THE FRONT DESK or EMAIL to email below no later than Friday, January 22nd by the end of the school day. Earlier is better!

Any questions? Email Jamie Decker at [Bayviewelementryyearbook@gmail.com](mailto:Bayviewelementryyearbook@gmail.com)





# MECCA

## Mainstreaming Education College & Career Advancement E-Support/Tutoring



Student Support  
Initiatives &  
Recovery

Department of Equity  
& Diversity



SCAN QR CODE



### Three physical & virtual locations

E-Learning Assistance • Homework Assistance • School Transition • Social Skill Development & ACT/SAT Prep  
Complete student registration: <https://bit.ly/2TY55FM>

#### North Area

Charles Drew Family  
Resource Center  
2600 NW 9th Court  
Pompano Bch, FL 33069

**Join with Team Code: z6ijxwj**  
Support Hours  
of Operation

3:30 p.m. - 4:40 p.m. (A-L)  
4:40 p.m. - 6:00 p.m. (M-Z)

#### Central Area

Lauderdale Manors  
Early Learning  
Resource Center  
1400 NW 14th Court Ft.  
Lauderdale FL, 33311

**Join with Team Code: z6ijxwj**  
Support Hours  
of Operation

4:00 p.m. - 5:00 p.m. (A-I)  
5:00 p.m. - 6:00 p.m. (J-R)  
6:00 p.m. - 7:00 p.m. (S-Z)

#### South Area

Gulfstream Early  
Learning Center  
120 SW 4th Ave  
Hallandale Beach, FL 33009

**Join with Team Code: z6ijxwj**  
Support Hours  
of Operation

4:00 p.m. - 5:30 p.m. (A-L)  
5:30 p.m. - 6:30 p.m. (M-Z)



The School Board of Broward County, Florida • Donna P. Korn, Chair • Dr. Rosalind Osgood, Vice Chair • Lori Alhadeff • Robin Bartleson • Heather P. Brinkworth •

Patricia Good • Laurie Rich Levinson • Ann Murray • Nora Rupert • Robert W. Runcie, Superintendent of Schools

The School Board of Broward County, Florida, prohibits any policy or practice which results in discrimination on the basis of age, race, disability, gender identity, gender expression, genetic information, marital status, national origin, race, religion, sex or sexual orientation. The School Board also provides equal access to the Boy and Girl Scout and other designated youth groups. Individuals who witness or have a discrimination and/or harassment complaint may call the Director, Equal Educational Opportunity/DOE Compliance Department & Student Equity Coordinator/Telerec Center at 754-321-2200 or Telefax Machine (TTY) 754-321-2158. Individuals with disabilities requesting accommodations under the Americans with Disabilities Act Amendments Act of 2008 (ADAAA) may call Equal Educational Opportunity/DOE Compliance Department at 754-321-2158 or Telefax Machine (TTY) 754-321-2158. [www.browardschools.com](http://www.browardschools.com)

## Sponsorship



**Sponsorship Opportunities: Subject to Change**

**Captain's Circle \$5,000 +**

- Large Banner, Premier Location (FACING George English Park for extended community to see or your choice of banner placement)
- Verbal and Print Recognition at PTA Meetings and Associated Communications with the OPPORTUNITY TO PRESENT and address membership around your organization per principal approval
- 4x a Year Flyer in the Weekly Edition of the School wide newsletter sent from the Principal
- Logo on Student T-Shirt (if provided depending on health conditions and physical return to school)
- Logo on Bayview Elementary PTA Website
- 4x year Flyer Post on Bayview PTA Facebook page
- 4x flyer sent via Memberhub to all PTA membership

**Co-Captain Club - \$2,500**

- Medium Banner, Highly Visible Location (FACING the Blacktop of George English Park)
- Verbal and Print Recognition at PTA Meetings and Associated Communications
- 3x a Year Flyer in the Weekly Edition of the School wide newsletter sent from the Principal
- Logo on Student T-Shirt (if provided depending on health conditions and physical return to school)
- Logo on Bayview Elementary PTA Website
- 3x year Flyer Post on Bayview PTA Facebook page
- 3x flyer sent via Memberhub to all PTA membership

**First Officer Club - \$1,500**

- Small Banner, Visible Location
- 3x a Year Flyer in the Weekly Edition of the School wide newsletter sent from the Principal
- 3x year Flyer Post on Bayview PTA Facebook page
- 3x flyer sent via Memberhub to all PTA membership
- Logo on Bayview Elementary PTA Website

**Second Officer Club - \$800**

- 3x a Year Flyer in the Weekly Edition of the School wide newsletter sent from the Principal
- Logo on Bayview Elementary PTA Website

---

## 5th Grade Enrichment





## 5<sup>th</sup> Grade Enrichment Sponsors Needed!!

5<sup>th</sup> grade is the students' final year at Bayview Elementary. Every year the 5<sup>th</sup> grade teachers and 5<sup>th</sup> grade enrichment team make this year special in many ways and we will not let COVID stop that from happening for the Class of 2021!

### Why do we need to raise money in 5<sup>th</sup> grade? Where does the money go?

- Yearbooks - We want to ensure that ALL 5<sup>th</sup> grade students get a yearbook – \$2,000
- T-shirts – Each student will receive a 5<sup>th</sup> grade t-shirt with all the students' names listed – \$700
- Tile wall - Every 5<sup>th</sup> grade class has a dedicated and permanent tile wall at the school – \$700
- End of year festivities – in the past it has been a party with lots of food and fun including a photo booth and DJ. Not sure what this year will bring but we will work to have some sort of celebration – \$1,500
- If we have any funds left over each class leaves the school a legacy gift. It could be an engraved bench, a memorial plaque, etc.

**You or your company can help us make this an amazing and memorable year for our kids!!**

### Available 5<sup>th</sup> Grade Sponsorship Packages

#### **Gold-\$750**

- \*Yearbook Business Ad (Half Page)
- \*Verbal and Print Recognition at PTA Meetings and Associated Communications
- \*Logo on Bayview Elementary PTA Website
- \*Facebook Posting on our Bayview PTA Page
- \*Logo on Class T-shirt

#### **Bronze-\$250**

- \*Verbal and Print Recognition at PTA Meetings and Associated Communications
- \*Logo on Bayview Elementary PTA Website
- \*Facebook Posting on Bayview Page

#### **Silver-\$500**

- \*Yearbook Business Ad (Quarter Page)
- \*Verbal and Print Recognition at PTA meetings/associated communications
- \*Logo on Bayview Elementary PTA website
- \*Facebook Posting on our Bayview PTA Page
- \* Logo on Class T-shirt

#### **Yearbook Business Ad**

- \*Full Page -\$180
- \*Half Page - \$100

Interested? Questions?

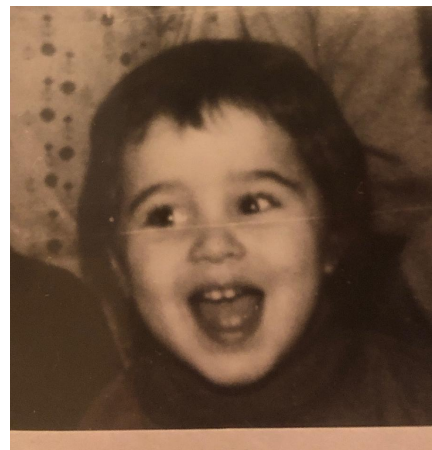
Contact Deidre Ferenc at [deij19@yahoo.com](mailto:deij19@yahoo.com) or Mary Donovan at [bayviewptavp2@gmail.com](mailto:bayviewptavp2@gmail.com)

---

## YOU'VE GOT THE CUTEST LITTLE BABY FACE

Every year the 5th grade students send in their baby pictures to be part of the Who's Who pages in our yearbook. The students enjoy trying to figure out who each baby picture belongs to.

Can you figure out who this little adorable



baby face belongs to?

Each week we will be featuring one of our fabulous staff members-see if you can guess!

Scroll to the bottom for the answer.

## Telehealth



### New Telehealth Service for Your School



Your student has access to on-demand doctor visits whether they are at school or at home— through Hazel Health.

A signed consent form is required to access this service. You can sign that form here: [my.hazel.co/broward](https://my.hazel.co/broward)

#### Hazel at School

Students are able to have a virtual doctor visit at the school health office to get the care they need without leaving school.

#### Hazel at Home

Families connect with Hazel's medical staff through messaging, by phone, and/or video so students can access care from home.

### Hazel's Scope of Services



Urgent Care Visits



Health Screenings



Patient/Family Education



Follow-up Care & Consultation



Coordination with Family Physician



Rx Sent to Preferred Pharmacy



Over-the-Counter Medication



School & Community Resource Referrals

#### Is there a cost?

Hazel Health accepts most major insurance. Students covered by Medicaid plans pay \$0 copay for Hazel doctor visits, and other plans, including Florida KidCare, will pay the standard copay for an urgent care visit. Other insurance plans may have a copay or fees associated with a Hazel doctor visit. Contact your insurance company or Hazel customer service to verify. Financial assistance is available to students without health insurance, ensuring all students have access to Hazel services.

Questions? You may contact your school staff, go to [my.hazel.co/broward](https://my.hazel.co/broward) or call (754) 253-5313

## Nuevo servicio de Telesalud en la escuela



Su estudiante tiene acceso a consultas médicas a pedido, ya sea en la escuela o en el hogar, a través de Hazel Health.

Se requiere un formulario de consentimiento firmado para acceder a este servicio. Puede firmar ese formulario aquí: [my.hazel.co/broward](http://my.hazel.co/broward)

### Hazel en la Escuela

Los estudiantes pueden tener una visita al doctor en un iPad en la oficina de salud de la escuela para obtener la atención que necesitan sin salir de la escuela.

### Hazel en Casa

Las familias pueden conectarse con el personal médico de Hazel a través de mensajes, por teléfono y/o video para que los estudiantes tengan acceso a cuidado desde casa.

### Alcance de Servicios de Hazel



Visitas de Atención Urgente



Exámenes de Salud



Educación a Paciente/Familia



Cuidados de Seguimiento y Consulta



Coordinación con el Doctor Familiar



Rx Enviado a su Farmacia Preferida



Medicamento sin Receta



Referencias de Recursos Escolares y Comunitarios

### ¿Hay algún costo?

Hazel Health acepta la mayoría de los seguros principales. Los estudiantes cubiertos por los planes de Medicaid pagan un copago de \$0 por las visitas al médico de Hazel, y otros planes, incluyendo Florida KidCare, pagarán el copago estándar por una visita de atención de urgencia. Otros planes de seguro pueden tener un copago o tarifas asociadas con una visita al médico de Hazel. Póngase en contacto con su compañía de seguros o con el servicio al cliente de Hazel para verificar. La asistencia financiera está disponible para los estudiantes sin seguro médico, lo que garantiza que todos los estudiantes tengan acceso a los servicios de Hazel.

Preguntas? Puede comunicarse con el personal de su escuela, o ir a [my.hazel.co/broward](http://my.hazel.co/broward) o llamar al (754) 253-5313

## PTA

Staying Updated on all school and PTA related information in MORE important now than ever! Please ensure that you join the PTA today so you are added to the distribution list. JOINING the PTA for \$10/person for \$20/family is the ONLY way to be added to

our PTA distribution list via our communication platform which is Memberhub. Stay, informed, stay connected and remain dedicated to our school PTA.

[Click to Join PTA News Alerts](#)



[PTA Purchases](#)

### Guess Who:

The adorable baby face belongs to our very own first grade teacher Ms. Carannante!!!

Remember to come back to see the next adorable baby!



**Bayview Elementary**  
1175 Middle River Drive  
Fort Lauderdale, FL 33304  
Phone: 754-322-5400  
Fax: 754-322-5440

[Contact Our Staff](#)

